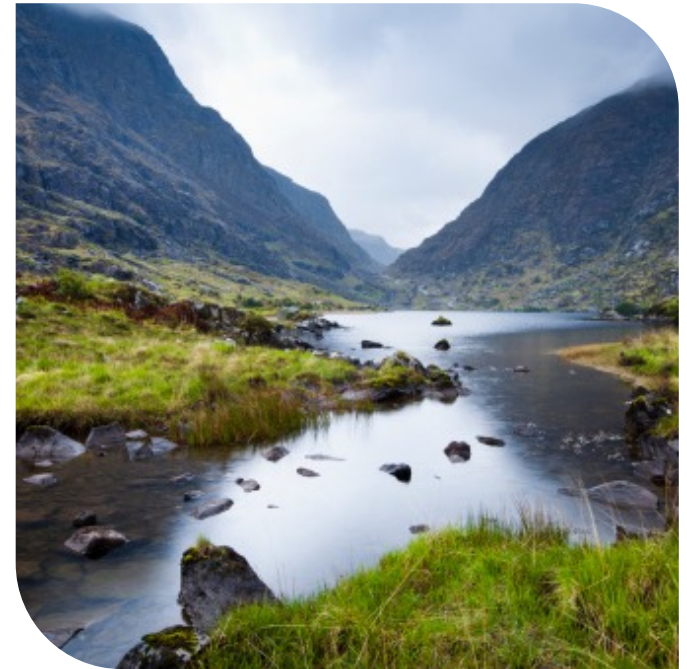


# Safeguarding Water Resources for our future

**Niall Gleeson**  
**Managing Director Irish Water**

**Environment Ireland Conference**  
**Croke Park 2<sup>nd</sup> October 2019**



# National utility delivering water services

## Waste PE Treated

5.4 million



*waste water PE total  
combined domestic & non  
domestic population served*

## Waste Population Served

3.1 million



*waste water domestic  
population served*

## Waste Treatment Plants

1,100



*waste water treatment  
plants*

## Water Population Served

3.9 million



*drinking water population  
served*

## Water Production Plants

788



*operational Irish Water - water  
treatment plants*

## Water Reservoirs

1,426



*drinking water reservoirs in  
the network*

## Water Production

1,739 MLD



*national water production*

## Water Production GDA

579 MLD



*GDA water production*

## Water Network

63,000 km

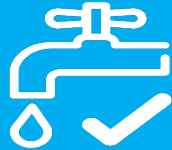


*water mains captured in the  
IW GIS*

# Significant challenges in 2014



**No single  
view of assets**



**1 million  
water quality at  
risk**



**24,000  
Boil water  
notices**



**49%  
Leakage**



**44 towns  
discharging  
untreated  
sewage**



**140 sewage  
plants  
over capacity**



**Inconsistent  
investment**



**Fragmented  
Service delivery**

# Irish Water has made good progress

KPI	Progress 2014-2019
Water supplies no longer at risk (EPA RAL)	92
Water treatment plants new or upgraded	44
Watermain new or rehabilitated	1,702 km
Total Leakage Savings (First Fix & network)	265 ML/day
Wastewater treatment plants new or upgraded	93
New/upgraded WWT capacity (PE)	668,250
Wastewater network new or rehabilitated	189 km

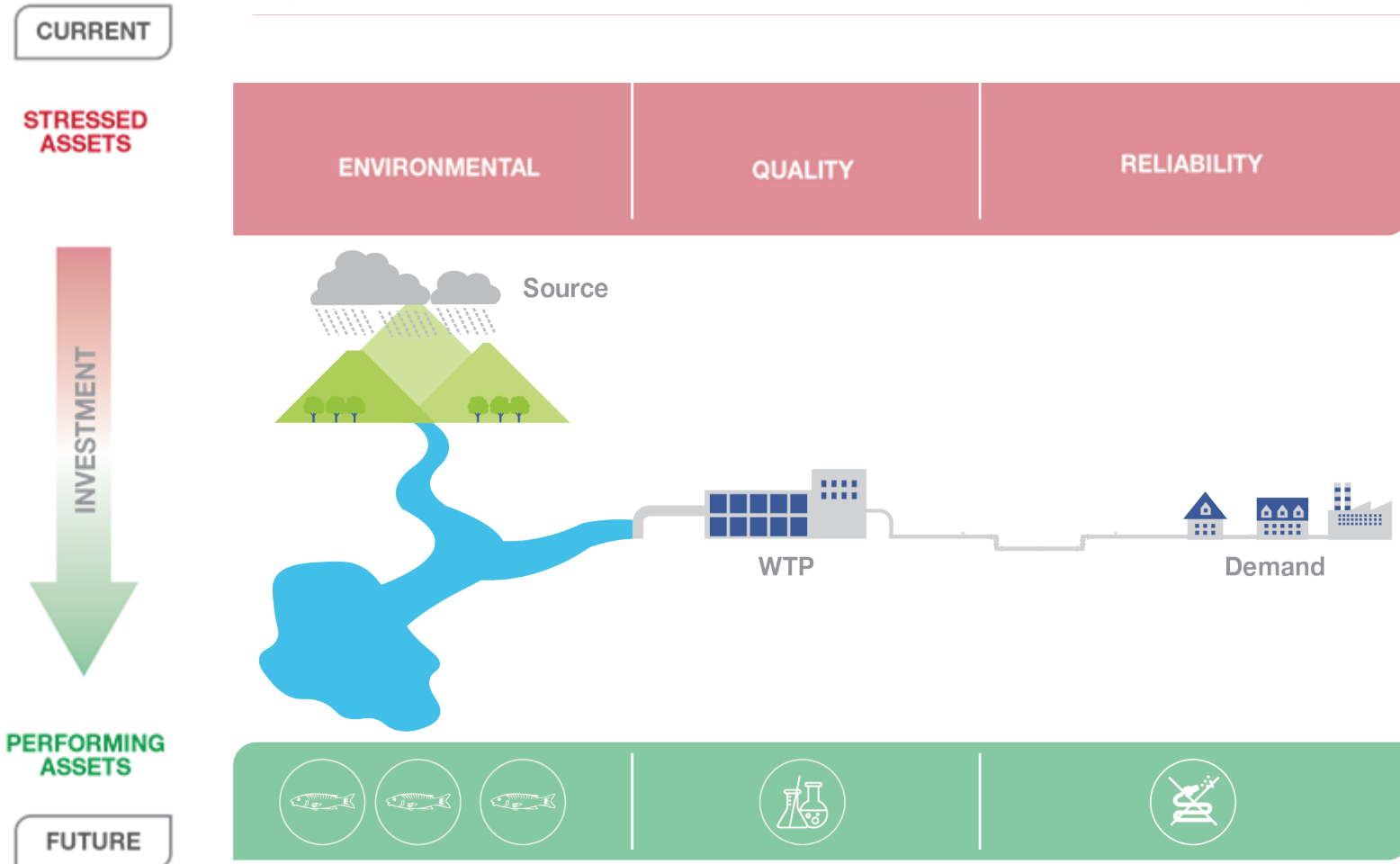
## National Water Resources Plan

- Abstracting **1.7ML/Day**
- 25 year strategy
- Water Framework Directive
- Protect the environment

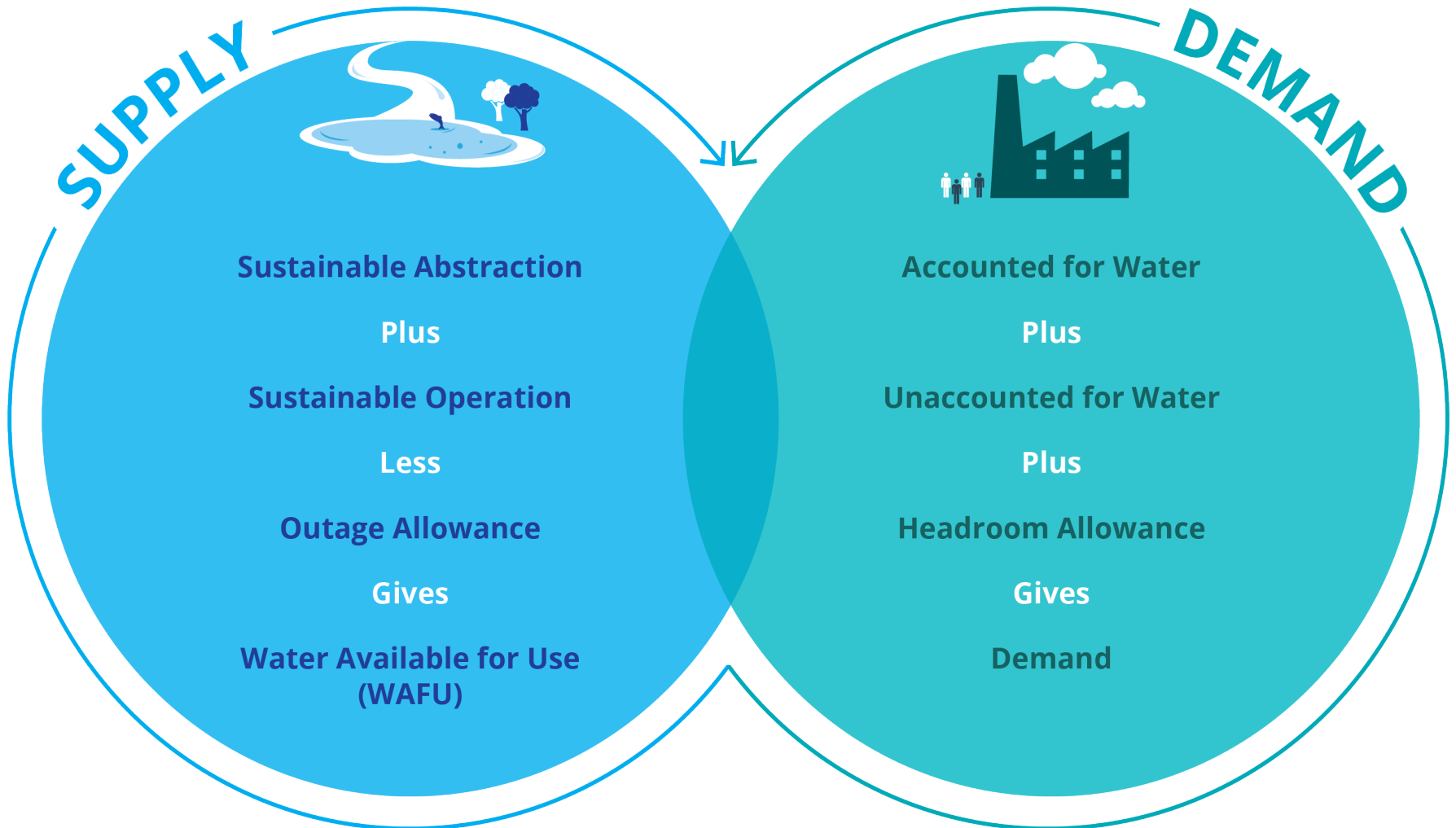


# Where we are and where we need to be

## HIGH RISK OPERATIONS



# It's all about Supply Demand Balance



# Each pillar has a role to play

Lose Less



**Reduce**  
Leakage

Irish Water

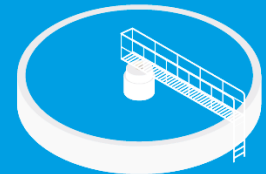
Use Less



**Improve** Water  
Efficiency

What we can all do

Supply Smarter



**Infrastructure**  
Improvements

Irish Water



# Use Less – Dedicated campaigns



**Business Customers**



**Household Customers**

# Lose less - a challenge for every utility

<b>1.7ML</b> Treated daily	<b>63,000km</b> Network	<b>12.5 million</b> Joints	<b>43%</b> Leakage
<b>788</b> Plants	<b>1 million</b> Meters (premises)	<b>4,400</b> bulk meters (network)	<b>3.8m</b> population

# Leakage - From reactive to systematic

## 2014 Significant Deficits

- 49% leakage
- No domestic meters
- Broken assets, poor quality data
- No national long term funded approach

## Rebuild the Foundations

- Fix the Assets
- Build new LMS (Leakage Management System)
- Data based investment approach

## Enable Systematic Approach

- Effective Leakage Management
- Leakage Reduction Programme
- Leakage reduction targets aligned to NWRP

# Effective Leakage Management

---

**Quality Leak  
Repairs**



**Mains  
Replacement**



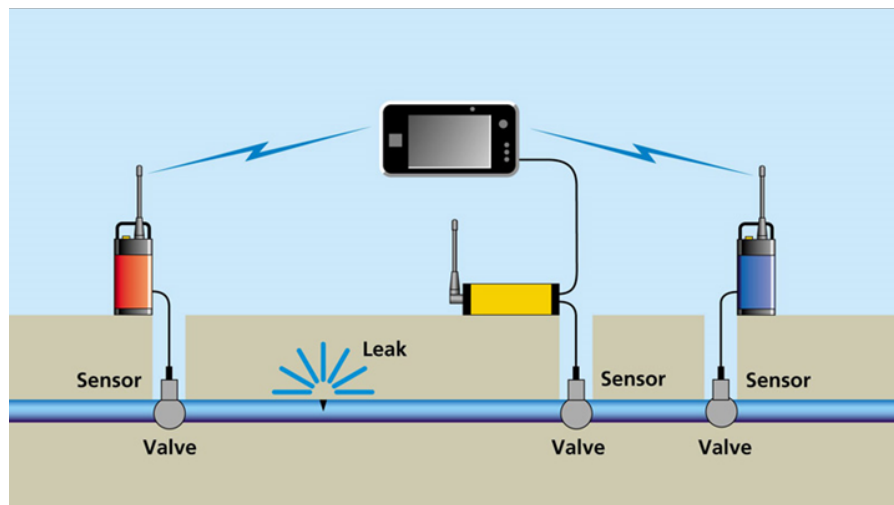
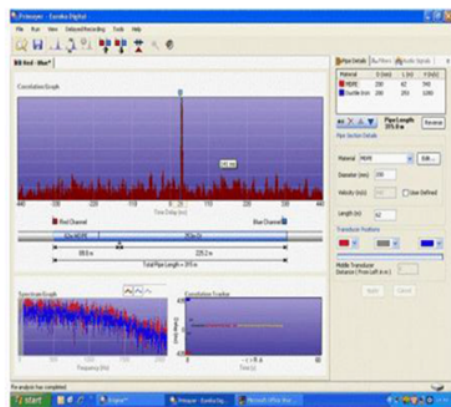
**Pressure  
Management**



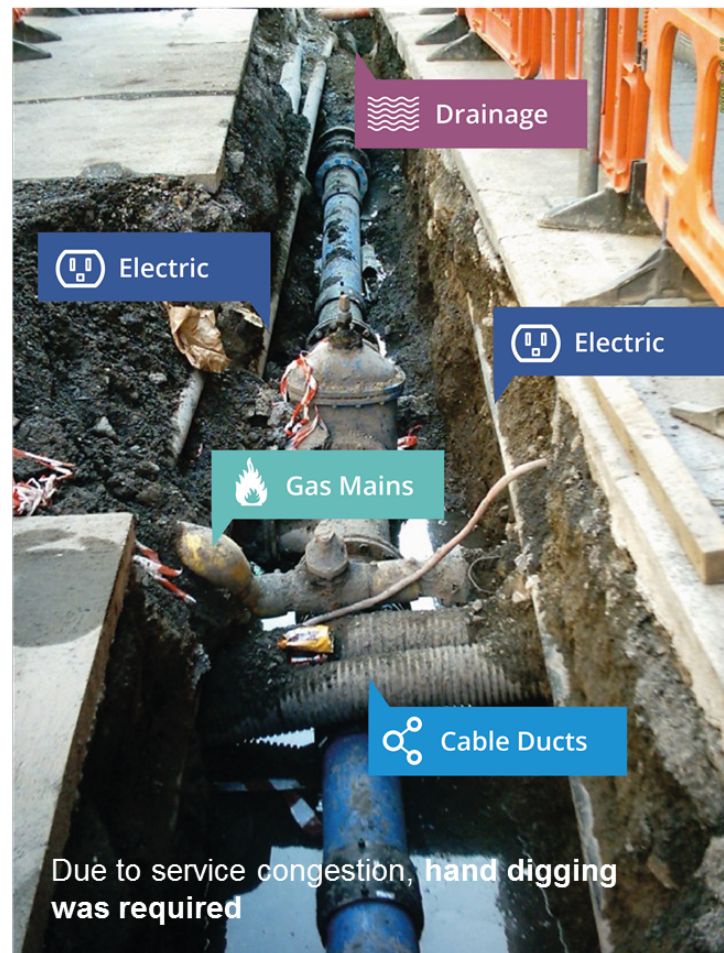
**Demand  
Management**



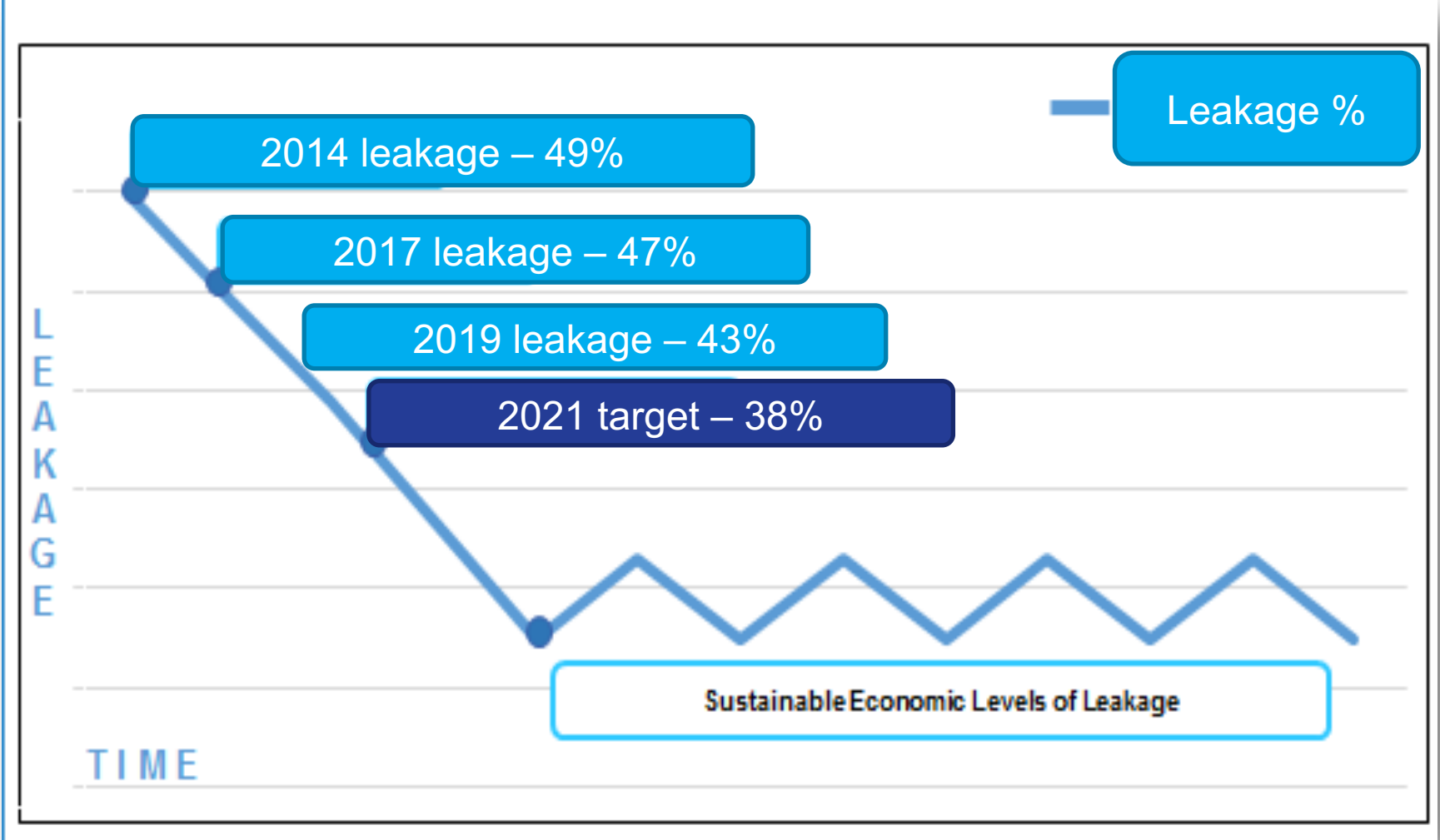
# Reducing leakage will take time and effort



3



# Steady improvements over time

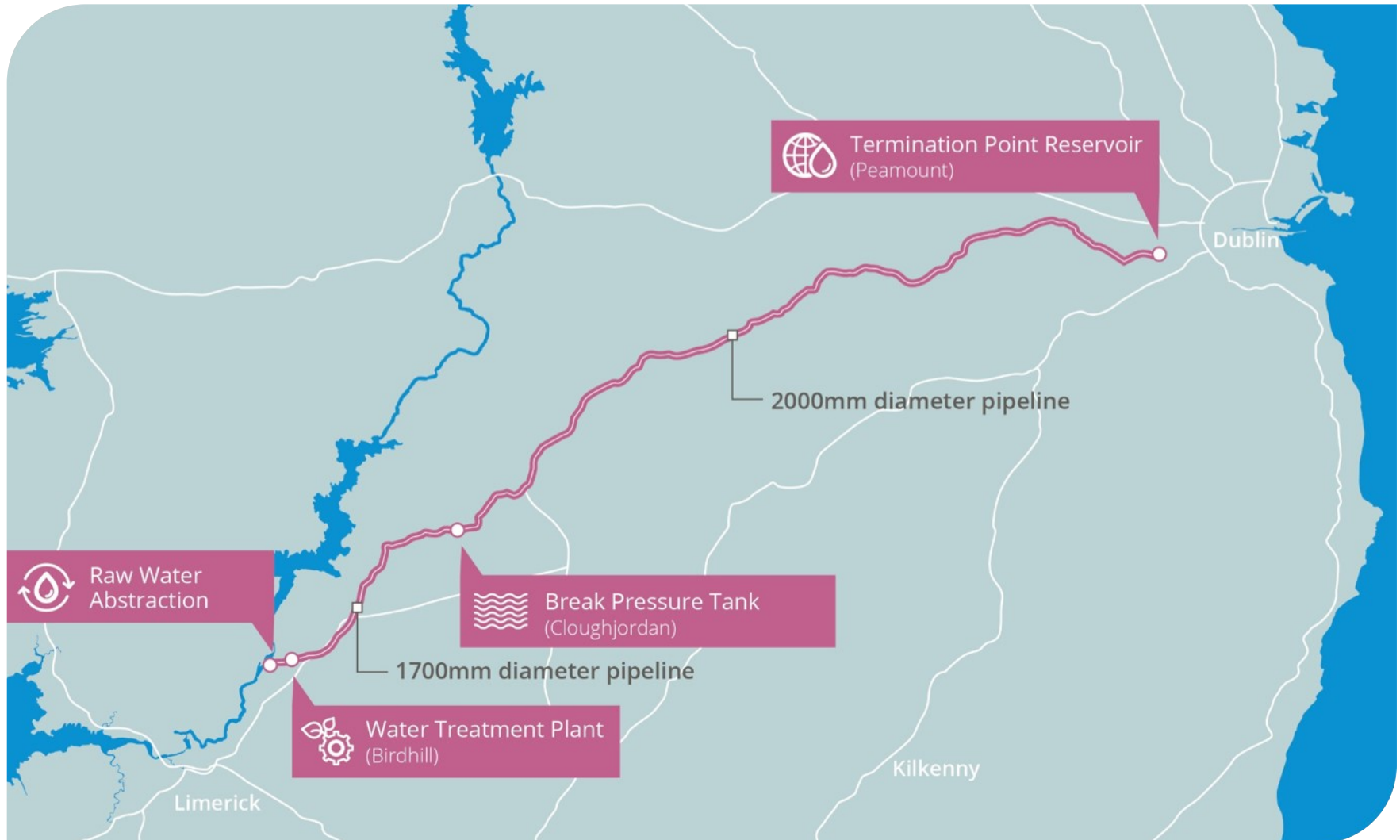


# Supply Smarter - Water Supply Project

- **Liffey** - **85%** of GDA supply and **40%** of average flow
- Lacks resilience and increased abstraction not sustainable
- **Parteen** - **2%** average flow otherwise used for electricity generation
- Sustainable and more resilient supply for GDA and Midlands to **2050**



# Water Supply Project – preferred option





# Thank you for your time

nwrp@water.ie  
water.ie/nwrp

# ervia

Aurora  
TELECOM



Gas  
Networks  
Ireland

UISCE  
EIREANN - IRISH  
WATER

