



Rialtas na hÉireann
Government of Ireland

Ireland's Waste Policy & Future Outlook Environment Ireland 2019

Kevin O Donoghue

Department of Communications, Climate Action and Environment

2nd October 2019



Rialtas na hÉireann
Government of Ireland

Government Action

CLIMATE ACTION PLAN 2019

To Tackle Climate Breakdown



Rialtas na hÉireann
Government of Ireland



Electricity

70%

Electricity generated from renewable sources by 2030



Phase-out Coal and Peat electricity generation



Homeowners to generate their own electricity and sell back to the grid under scheme for **micro-generation**



Transport

Increase the number of EVs by 2030 to circa



1 million

Build EV charging network to stay ahead of demand

Expand our network of cycle paths and 'Park and Ride' facilities, helping ease congestion

No diesel-only purchases for public buses in our cities from 1 July 2019



Agriculture

Deliver GHG emissions reduction identified by Teagasc by creating new, sustainable opportunities for family farms



8,000 ha

on average, of newly planted forest per year

40,000 ha

at least, of improved grasslands on drained organic soils per year



Buildings



500,000

existing homes to upgrade to 'B2' equivalent BER by 2030

600,000

heat pumps installed by 2030 (of which 400,000 will be in existing buildings)



New retrofitting delivery model, which will group retrofits together, leverage smart finance, and ensure easy pay-back methods



Waste and the Circular Economy



Reduce the percentage of municipal waste sent to landfill to

10%

by 2035

Reduce food waste by 50% by 2030



By 2030

Recycle 70% of packaging waste



Recycle 55% of plastic packaging waste

Eliminate non-recyclable plastic and impose higher fees on the production of materials that are difficult to recycle

Ban specific single-use plastic convenience items

including polystyrene food, cup, and drink containers





Rialtas na hÉireann Government of Ireland

12.5 Actions

The detailed implementation maps for actions, including timelines and responsible organisations, are set out in the accompanying Annex.

Action Number	Action
135	Lead the transformation from waste management to circular economy practice through delivery of a new national policy
136	Revise waste legislation to incorporate new circular economy requirements, including legally binding waste/recycling targets
137	Develop a new National Waste Prevention Programme, and Regional Waste Management Plans that will guide our transition to a circular economy by EPA and Local Authorities
138	Support the development of eco-design and circular economy opportunities for Irish enterprises to reduce waste over the full lifecycle of products
139	Develop and implement a suite of measures to reduce the impact of single-use plastics
140	Maintain Government leadership in taking responsibility for own resource consumption, particularly single use plastics, energy, waste and water
141	Identify opportunities to strengthen the regulatory and enforcement frameworks and structures for the waste collection and management system, to maximise the collection of clean, segregated materials for reuse and/or recycling from all households and businesses, and to incentivise consumers to reduce, reuse and recycle
142	Regulate and incentivise producers of waste, particularly packaging, to ensure the prevention of waste and the use of recycled materials in packaging products
143	We will scope a number of possible environmental levies, including a possible levy on single use plastics, as part of the review of the Environment Fund. Further detailed research would be required prior to the introduction of any new levy
144	We will identify and commence delivery of measures to address the key regulatory barriers to the development of the bioeconomy, including exploring opportunities to establish "End of Waste" criteria for certain bio-wastes

Waste and the Circular Economy

Action 135: Lead the transformation from waste management to circular economy practice through delivery of a new national policy

Steps Necessary for Delivery	Timeline by Quarter	Lead	Other Key Stakeholders
Commence public consultation on waste policy	Q3 2019	DCCAE	
Review of submissions for development of draft plan	Q3/Q4 2019	DCCAE	
Development and publication of Circular Economy Action Plan	Q2 2020	DCCAE	

Action 141: Identify opportunities to strengthen the regulatory and enforcement frameworks and structures for the waste collection and management system, to maximise the collection of clean, segregated materials for reuse and/or recycling from all households and businesses, and to incentivise consumers to reduce, reuse and recycle

Steps Necessary for Delivery	Timeline by Quarter	Lead	Other Key Stakeholders
Review waste enforcement legislation as part of waste review	Q4 2019	DCCAE	
New waste enforcement structures	Q4 2020	DCCAE	
Implementation of Regional Waste Management Plans	From Q1 2022	DCCAE	



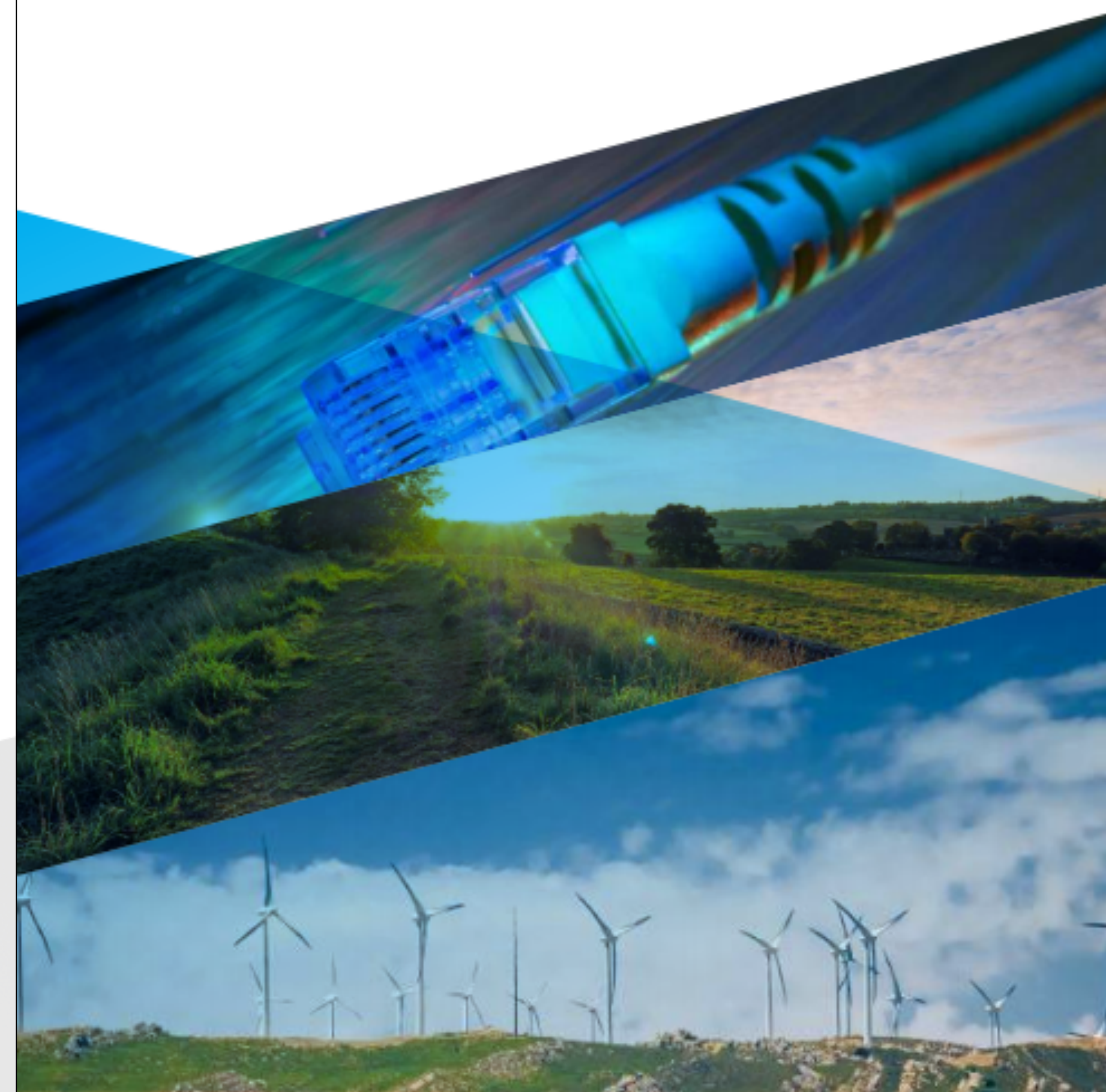
Rialtas na hÉireann
Government of Ireland

Statement of Strategy



Roinn Cumarsáide, Gníomhaithe
ar son na hAeráide & Comhshaoil
Department of Communications,
Climate Action & Environment

Statement of Strategy 2019 – 2021





Rialtas na hÉireann
Government of Ireland

DCCAE Statement of Strategy Summary

- GOAL 1:** Ireland will deliver an effective response to *climate disruption*.
- GOAL 2:** Provide access to a world class *communications network*.
- GOAL 3:** Use *resources* with care and responsibility, **minimising the generation of waste**.
- GOAL 4:** Be best in class in *creating the policy direction and the regulatory environment* for our sectors.



Rialtas na hÉireann
Government of Ireland

Project Ireland 2040

Building Ireland's Future



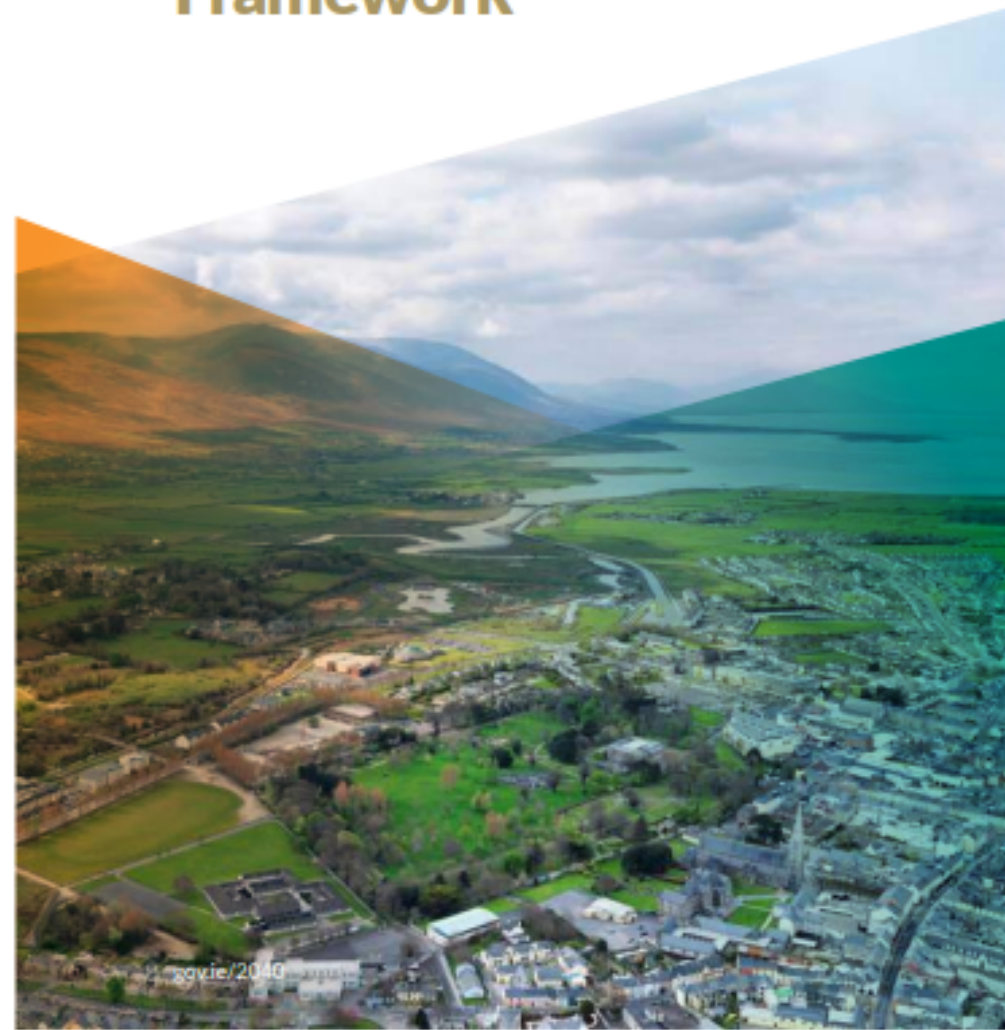
gov.ie/2040



Rialtas na hÉireann
Government of Ireland

Project Ireland 2040

National Planning Framework



gov.ie/2040



Rialtas na hÉireann
Government of Ireland

Project Ireland 2040

National Development Plan 2018–2027



gov.ie/2040



Assessment of NDP C&D waste generation

Table 1 C&D Waste Forecasts Low Growth Scenarios

Year	2012	2013	2014	2015	2016	2017	2018	2019	2020	2021	2022	2023	2024	2025	2026	2027
Construction Output Factors	Actual Data					116.6%	111.1%	106%	104.2%	104%	104%	104%	104%	104%	104%	104%
Soil Wastes	2.3M	2.0M	2.9M	3.5M	4.3M	5.0M	5.6M	6.0M	6.2M	6.4M	6.6M	7.0M	7.2M	7.5M	7.8M	8.0M
Non-Haz, non-inert (12%)	0.4 M	0.3 M	0.5 M	0.6 M	0.6 M	0.8 M	0.8 M	0.9 M	0.9 M	1.0 M	1.0 M	1.0 M	1.1 M	1.1 M	1.2 M	1.2 M
Total C & D Waste	3.1M	2.9M	3.8M	5.1M	5.4M	6.3M	7.0M	7.4M	7.7M	8.0M	8.4M	8.7M	9.0M	9.4M	9.7M	10.2M

Table 2 C&D Waste Forecasts High Growth Scenarios

Year	2012	2013	2014	2015	2016	2017	2018	2019	2020	2021	2022	2023	2024	2025	2026	2027
Construction Output Factors	Actual Data					116.6%	111.1%	106%	106%	106%	106%	106%	106%	106%	106%	106%
Soil Wastes	2.3M	2.0M	2.9M	3.5M	4.3M	5.0M	5.6M	6.0M	6.3M	6.6M	7.0M	7.5M	7.9M	8.4M	8.9M	9.4M
Non-Haz, non-inert (12%)	0.4 M	0.3 M	0.5 M	0.6 M	0.6 M	0.8 M	0.8 M	0.9 M	0.9 M	1.0 M	1.1 M	1.1 M	1.2 M	1.3 M	1.3 M	1.4 M
Total C&D Waste	3.1M	2.9M	3.8M	5.1M	5.4M	6.3M	7.0M	7.4M	7.9M	8.3M	8.8M	9.4M	9.9M	10.5M	11.1M	11.8M

Construction Waste Resource Group



Subgroups:

- 1) Capacity & Projections** (*Regional Waste Management Office*)
- 2) Best Practices on Site** (*EPA*)
- 3) Enforcement & Waste Flows** (*Waste Enforcement Regional Lead Authority*)
- 4) Regulatory Processes** (*DCCAE*)

Circular Economy Package



- New EU Waste Recycling Targets agreed in May 2018

	2025	2030	2035
MUNICIPAL WASTE			
Recycling Target for Municipal Waste	55%	60%	65%
Maximum Amount of Municipal Waste to Landfill			10%
PACKAGING RECYCLING TARGETS			
All Packaging	65%	70%	
Plastic	50%	55%	
Paper & Cardboard	75%	80%	
Glass	70%	75%	
Aluminium	50%	60%	
Ferrous Metals	70%	80%	
Wood	25%	30%	

What is in our bins?

EPA Municipal Waste Characterisation Study 2018



GENERAL WASTE

- 19% PLASTICS
- 16% ORGANIC WASTE (FOOD & GARDEN)
- 15% PAPER, CARD & BEVERAGE CONTAINERS
- 11% FINES
- 10% TEXTILES
- 10% NAPPIES
- 9% METALS, GLASS AND WOOD
- 2% HAZARDOUS WASTES



RECYCLING

- 20% PLASTICS
- 61% PAPER, CARD & BEVERAGE CONTAINERS
- 7% METALS, GLASS AND WOOD
- 3% TEXTILES
- 2% ORGANIC WASTE (FOOD & GARDEN)
- 1% HAZARDOUS WASTES



BROWN BIN

- 4% PLASTICS
- 4% PAPER, CARD & BEVERAGE CONTAINERS
- 84% ORGANIC WASTE (FOOD & GARDEN)
- 9% TEXTILES, METALS, GLASS, WOOD AND OTHERS

The EU will be the global front-runner in waste management and recycling

Separate Collection

- Hazardous household waste by 2022
- Bio-waste by 2023 and
- Textiles by 2025



Extended Producer Responsibility & Ireland's Next Steps



- Identify what is required on foot of changes to EPR provisions in the Circular Economy Legislative Package and the Single Use Plastics Directive
- Engage with key stakeholders and raise awareness of changes in relation to EPR and SUP



Ireland's Future Waste Policy and Circular Economy

High Level Consultative Forum

Minister Bruton said:
“We are now deciding how to chart the route ahead. I am determined to step up ambition and put in place policy tools to deliver on our new targets. Today is a chance to shape that roadmap. Leadership in this area is crucial if we are to secure a more sustainable, resilient Ireland for future generations.”









Rialtas na hÉireann
Government of Ireland



ANTI-DUMPING INITIATIVE 2018

OVERVIEW



SOUTHERN REGION WERLA

comprises of the Local authorities in Limerick, Clare, Kerry, Cork City, Cork County, Tipperary, Wexford, Waterford, Carlow and Kilkenny.



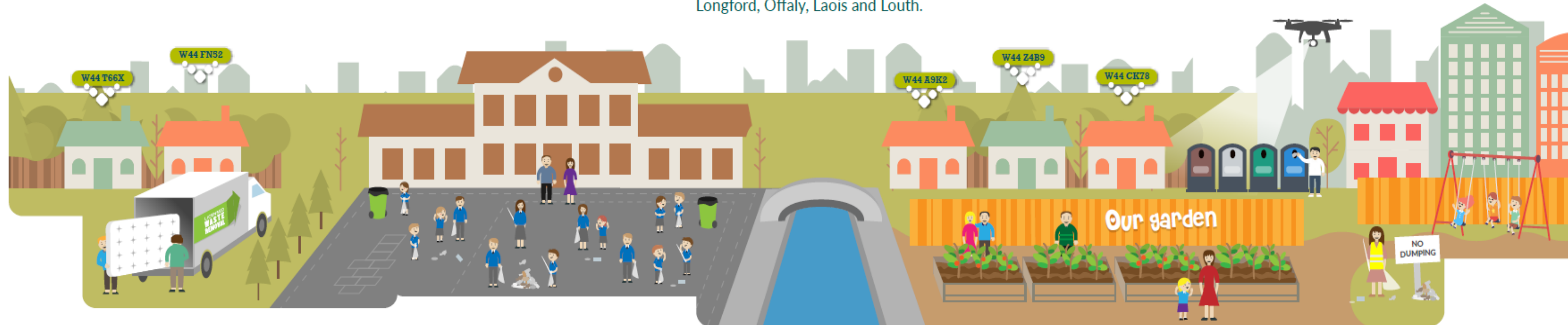
CONNACHT ULSTER REGION WERLA

comprises of the Local authorities in Donegal, Galway City, Galway County, Mayo, Leitrim, Roscommon, Sligo, Monaghan and Cavan.



EASTERN-MIDLANDS REGION WERLA

comprises of the Local authorities in Dublin City, Fingal, Dun Laoghaire-Rathdown, South Dublin, Kildare, Wicklow, Meath, Westmeath, Longford, Offaly, Laois and Louth.



The 2018 Anti-Dumping Initiative was co-ordinated through the WERLA offices and funded by the Department of Communications, Climate Action and Environment



Examples of Projects

– Mattress Amnesty



WERLA Region	No. of Mattresses
Connaught Ulster Region (CUR)	4,464
Eastern Midlands Region (EMR)	3,184
Southern Region (SR)	3,266
Total	10,914



Ireland's guide to waste mywaste



Your recycling list!

Rigid Plastic



Tins & Cans



Clean,
Dry and
Loose

Paper & Cardboard



The screenshot shows the mywaste website homepage. At the top, there is a green navigation bar with the mywaste logo and menu items: what, where, why, more, and a search bar. Below the navigation bar is a large green banner featuring a recycling symbol (three arrows forming a triangle) with a white question mark in the center. To the left of the banner, the text reads "What do I do with....?" followed by "Your guide to disposing about just about anything" and "consult our A to Z page". Below this text is a button that says "find waste services near you" with a location pin icon and "visit our waste services locator". At the bottom of the page, there is a grid of six buttons: "my bulky items", "my recycling", "my WEEE", "my food waste", "my textiles", and "my impact", each with a right-pointing arrow.

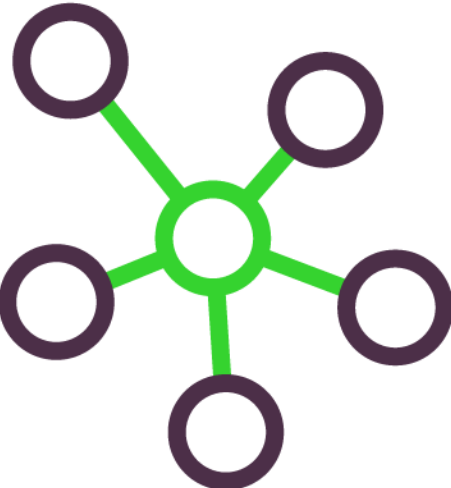
New Platform to:



Rialtas na hÉireann
Government of Ireland



inform citizens
regarding waste



connect stakeholders
with their audience



promote policy

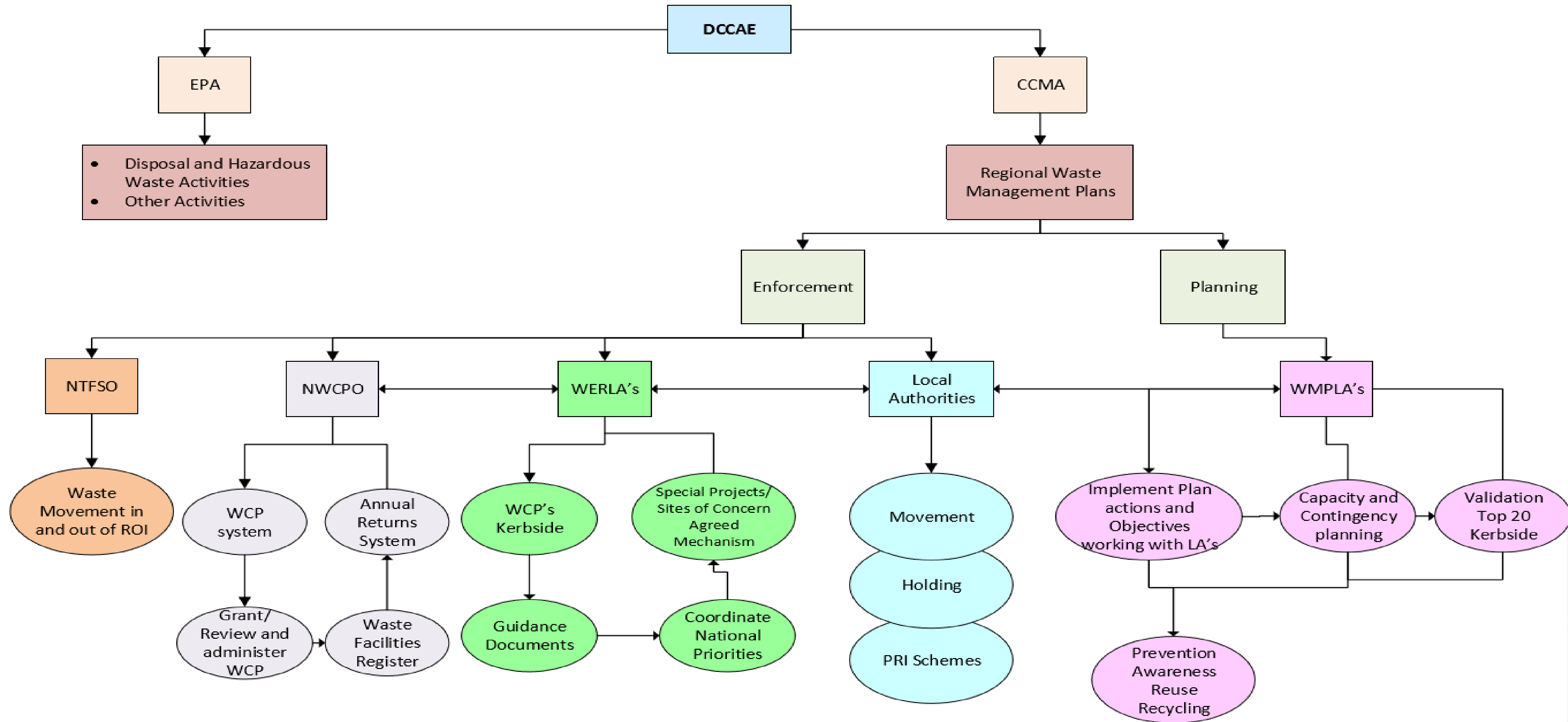


progress waste
targets



prepare for
future challenges





Regulated Entities

WASTE MANAGEMENT
ACTIVITIES
LOCAL AUTHORITIES / NGO

WASTE MANAGEMENT
ACTIVITIES
COMPANIES

WASTE PRODUCTION
COMPANIES

WASTE PRODUCTION
Individuals



“THERE IS NO SUCH
THING AS ‘AWAY’.
WHEN WE THROW
ANYTHING AWAY IT
MUST GO SOMEWHERE.”

Annie Leonard





Rialtas na hÉireann
Government of Ireland

Ireland's Future Waste Policy and Circular Economy

Written Submissions to wppr@DCCAE.gov.ie