

# **Environmental Sensitivity Mapping**

Ainhoa González, School of Geography, University College Dublin

# Collaborative partners



Ainhoa González...Anna Rymzsewicz, Christina Kelly, David Jordan



Justin Gleeson, Eoghan McCarthy...Katie Goodwin

**Steering Committee:** Tadhg O'Mahony (EPA), Tara Higgins (EPA), Cian O'Mahony (EPA), Gemma Weir (NPWS), Bernie Guest (Waterford Co.Co.), Saeed Khan (RPS), Des Cox (EirGrid), John Mc Cann (SEAI), Maria Byrne (OSi), Paul Scott (DHLPG)

**EPA STRIVE Research Programme & Ordnance Survey Ireland**



**EPA SEA Team**



# SEA and Spatial Planning



- Population and human health
- Biodiversity, flora, fauna
- Air and climate
- Soils and geology
- Water
- Landscape
- Cultural heritage
- Material assets
- Inter-relationships

**Multiple considerations,  
spatial implications, consultation**

## **Spatial evidence-base for SEA and planning decisions**

- ✓ Assessment consistency and transparency
- ✓ Intrinsic environmental conditions > susceptible to change
- ✓ Early-warning of potential land-use conflicts



# Data Viewer

## Access, Visualisation, Discovery

**GeoHive Environmental Sensitivity Mapping** Find Address or Place

**Layer List**

- Air and Climatic Factors
- Biodiversity Flora Fauna
- Ancient Woodlands
- Annex I Habitats
- BirdWatch Sensitivity
- Coastal Habitats-Saltmarshes
- Contributions to Potential Ecological Networks
  - Areas which do not form part of an ecological network
  - Part of 1 ecological network - Areas which form part of 1 ecological network
  - Part of 2 ecological networks - Areas which form part of 2 ecological networks
  - Part of 3 ecological networks - Areas which form part of 3 ecological networks

Map labels: Londerry/, Belfast, in

Scale: 60km

Coordinates: -14.214 55.187 Degrees

Logos: epa, UCD, AIRO

Footer: © Ordnance Survey Ireland | Esri, HERE, Garmin, FAO, NOAA, USGS **esri** POWERED BY

# Over 100 SEA-relevant Geospatial datasets

## Air and Climate

- Air zones
- Coal restricted areas
- Historical flood extents
- Soil carbon (eco serv)
- Vegetation carbon (eco serv)
- Water retention (eco serv)
- Wind speeds

## Biodiversity, Flora & Fauna

- Ancient woodlands
- Annex I habitats (Habitats Direct)
- Birdwatch sensitivity (to windfarms)
- Coastal habitats – Saltmarshes
- Contributions to pot. ecological networks (eco serv)
- Forest inventory
- Legally protected and policy relevant species (eco serv)
- Margaritifera sensitive areas
- Natural Heritage Areas (NHAs)
- Proposed NHAs
- Salmonid waters
- Special Areas of Conservation (SACs)
- Special Protection Areas (SPAs)
- Terrestrial biodiversity (eco serv)
- Woodland habitats

## Cultural Heritage

- Irish landmark trust
- Museums, collections and archives
- NIAH
- Sites and Monuments Record
- Walled towns
- World Heritage Sites

## Landscape

- Landscape character areas

## Material Assets

- Active quarries
- Airfields and airports
- Broadband access
- Current wind farms
- Discharge licences
- Extractive industries register
- Historic mine districts
- IPPC licences
- Landfill sites
- Licensed waste facilities
- Ports
- Railway network
- Road network
- Settlements
- Waste water treatment plants and status

## Population and Human Health

- Disability
- General health
- Pobal HP Deprivation Index
- Housing stock (vacant & holiday homes)
- Travel to work >30min and >1hr
- Labour force unemployed
- Population change (percentage and total)
- Population density per Km<sup>2</sup>
- WFD RPA Drinking water (lakes, rivers and groundwater)

## Soils and Geology

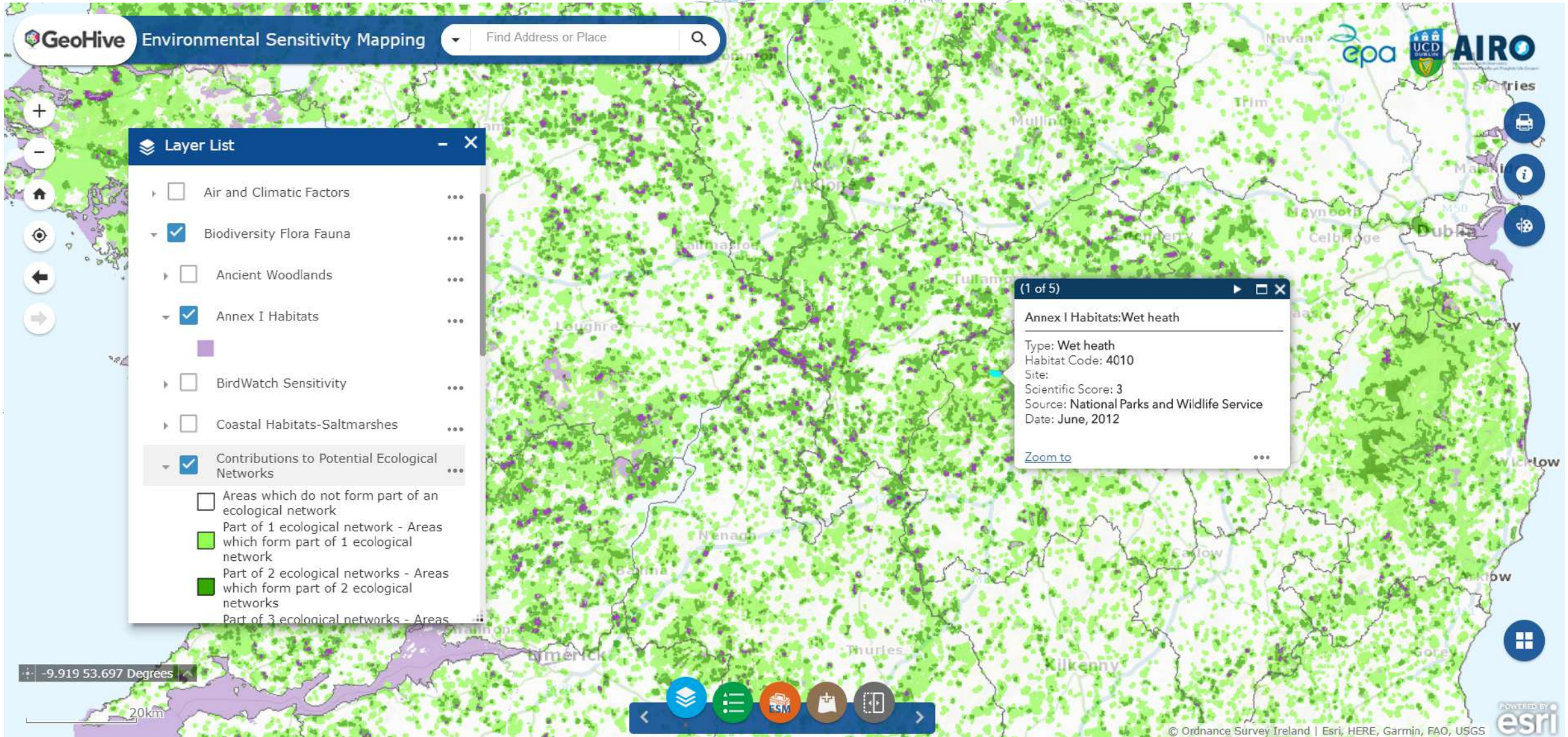
- Bedrock
- CORINE landcover
- Geoparks
- Geosites
- Landslide events and susceptibility
- Mineral locations
- Outcrops
- Peat bogs
- Soil permeability
- Soils

## Water

- Aquifer vulnerability
- Bedrock aquifer
- Biological Q values
- Hydrometric areas
- Groundwater source protection areas
- Wetlands
- Water abstraction points
- WFD high status objectives
- WFD risk
- WFD status
- WFD RPA: Nutrient sensitive WFD RPA: Recreational waters
- WFD RPA: Shellfish areas
- WFD RPA: Water dependent habitats (SACs, SPAs)
- Water management Units

# Data Viewer

Access, Visualisation, Discovery



# ESM Widget

Bespoke geoprocessing tool

**GeoHive Environmental Sensitivity Mapping** Find Address or Place

**ESM SEA Tool**

- Natural Heritage Areas
- Proposed Natural Heritage Areas
- Candidate Special Areas of Conservation
- Salmonid Waters
- Special Protection Areas
- Woodland Habitats

Weight: **2**

Theme: Cultural and Heritage

- National Inventory of Architectural Heritage
- Record of Monuments and Places

Weight: **1**

Theme: Soils and Geology

- Geoparks and Geosites

Map labels: Tralee, Killarney, Charleville, Mallow, Cork, Carrigrohane, Bandon, Skibbereen, Yough.

Logos: EPA, UCD DUBLIN, AIRO

Scale: -10.990 51.321 Degrees, 20km

© Ordnance Survey Ireland | Esri, HERE, Garmin, FAO, USGS

POWERED BY **esri**

# ESM Widget Methodology

## Multi-criteria spatial analysis

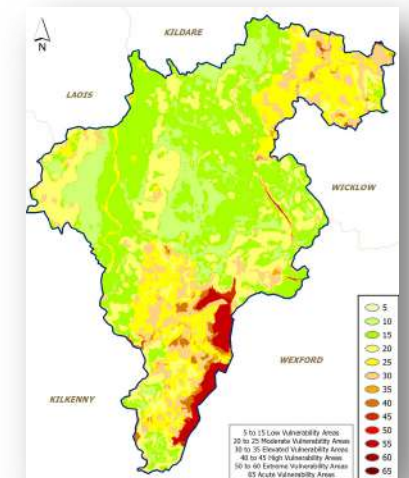
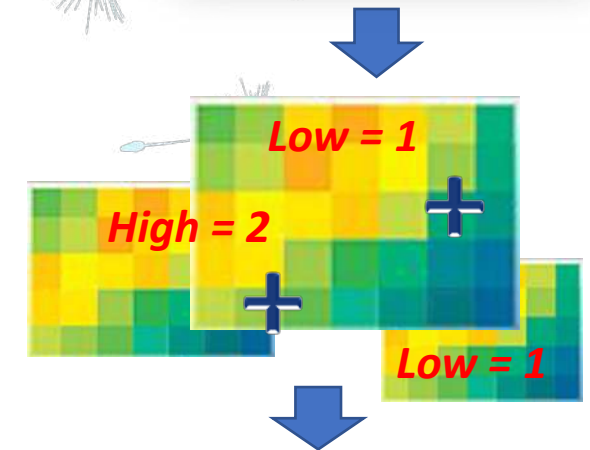
- Weighted linear algorithm
- Aggregation of multiple criteria
- Incorporation of stakeholders concerns or importance values in the form of weights

$$ES = \sum_{j=1}^n W_j V_j$$

where ES = Environmental Sensitivity

$W_j$  = Environmental susceptibility of factor  $j$  according to scientific scores

$V_j$  = Environmental significance of factor  $j$  according to public/stakeholder opinion





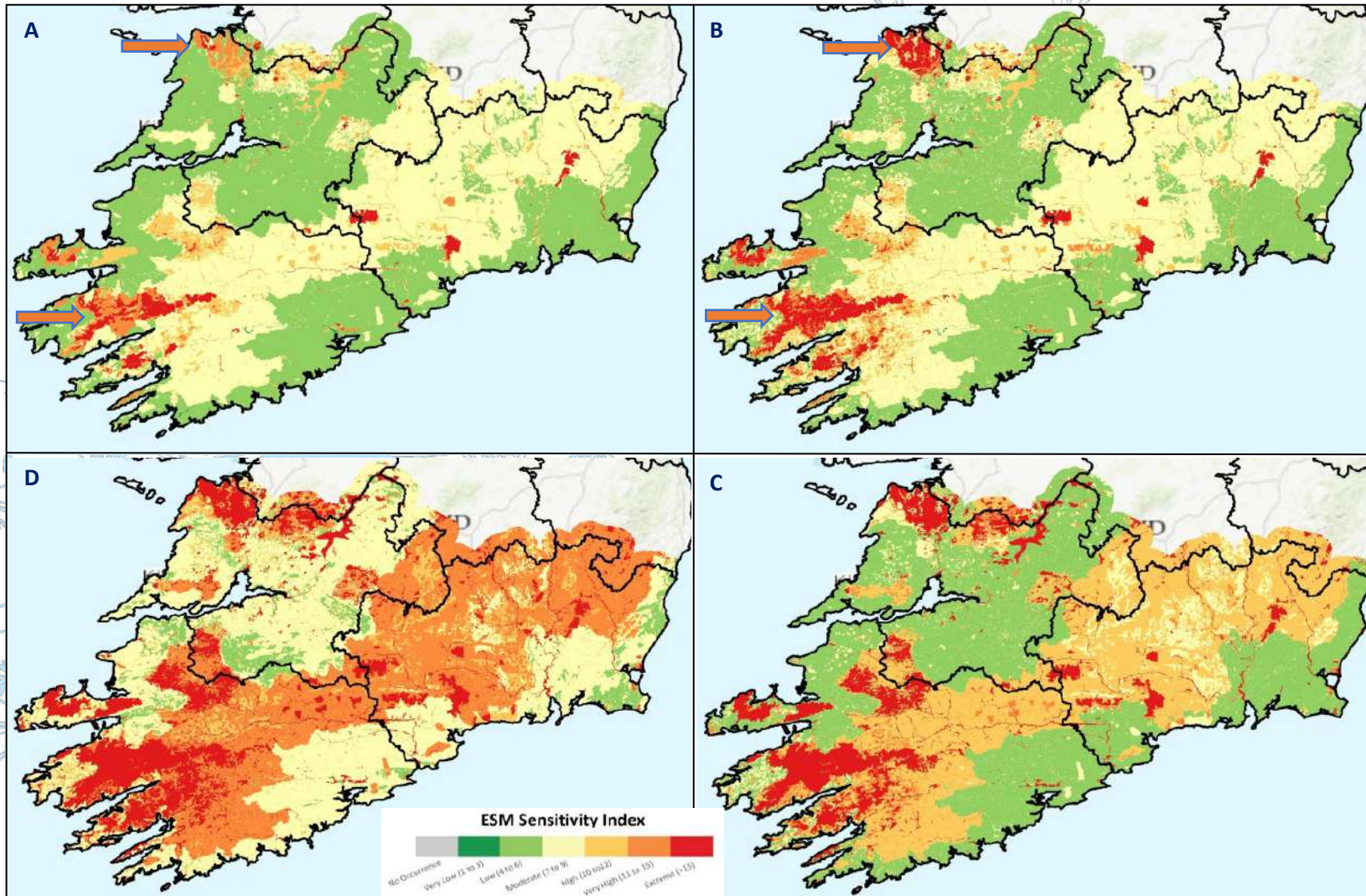
# Scientific Scores

- Based on conservation status, quality and risk
- Extensive consultation
- 3 stakeholder workshops – development and testing of the webtool
- Over 40 stakeholders from government, local authorities, consultancies...SEAI, NPWS, NIEA, EirGrid...



Sensitivity Scores 1=Low, 2=Medium, 3=High	1	2	3
<b>Population and Human Health</b>			
% Population change 2006-2011 EDs			
• Decreasing			
• Increasing			
Population density per sq km 2011 SAs			
• High			
• Low			
Total population 2011			
WFD RPA Groundwater drinking water			X
WFD RPA Surface water drinking water (Lakes)			X
WFD RPA Surface water drinking water (Rivers)			X
<b>Biodiversity, Flora and Fauna</b>			
Ancient woodlands			
• Ancient Woodland			X
• Possible Ancient Woodland			X
• Long-established Woodland (LEW I)		X	
• Long-established Woodland (LEW II)		X	
Habitat Directive Annex I Habitats			X
BirdWatch sensitivity (to wind energy dev.)			
Coastal habitats (Saltmarshes)		X	
Forest Inventory and Planning System			
• Deciduous	X	X	
• Coniferous			
Margaritifera sensitive areas			
• Catchments of SAC populations listed in S.I. 296 of 2009			X
• Catchments of other extant populations			X
• Catchments with previous records of <u>Margaritifera</u> but current status unknown		X	
Natural Heritage Areas			X
Proposed Natural Heritage Areas		X	

# Contextualising Sensitivity



(a) biodiversity, flora and fauna and water sensitivities; (b) sensitivities associated biodiversity, water, cultural heritage and soils where all have the same weight/importance; (c) sensitivities associated with biodiversity, water, cultural heritage and soils where the biodiversity themes is given greater importance (i.e. a weight of 2); and d) sensitivities associated with biodiversity, water, cultural heritage and soils where the biodiversity and water themes are given greater importance (i.e. a weight of 2).

# ESM Output

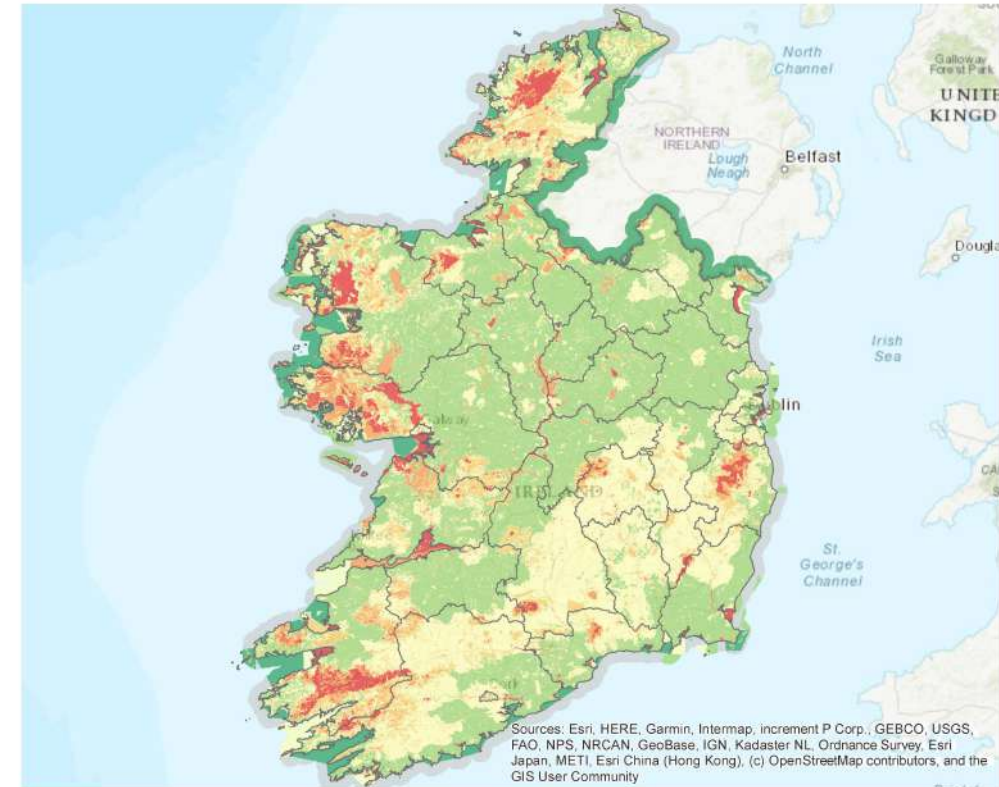
## Transparency

- Map creator
- Date
- Selected datasets
- Applied weights

## Comparability

- Transboundary
- When selecting same criteria and weights

## National SEA Analysis (NPF)



Sources: Esri, HERE, Garmin, Intermap, increment P Corp., GEBCO, USGS, FAO, NPS, NRCAN, GeoBase, IGN, Kadaster NL, Ordnance Survey, Esri Japan, METI, Esri China (Hong Kong), (c) OpenStreetMap contributors, and the GIS User Community



### ESM Sensitivity Index



Date: 9/22/2019 Time: 2:16:21 PM Author: AIRO

\*This map is an aggregate result based on the variables and user defined weights listed below.  
Warning: Please note that weights are only to be used to emphasize the relative significance of an environmental aspect - applying weights to more than two themes would magnify, and possibly overstate, the overall sensitivity.

**Air & Climactic Weight: 1 Variables:** Air Zones, Historical Flood Extents

**Biodiversity, flora and fauna Weight: 1 Variables:** Ancient Woodlands, Annex I Habitats, Forest Inventory, Marginal Flora Sensitive Areas, Natural Heritage Areas, Proposed Natural Heritage Areas, Special Areas of Conservation, Special Protection Areas

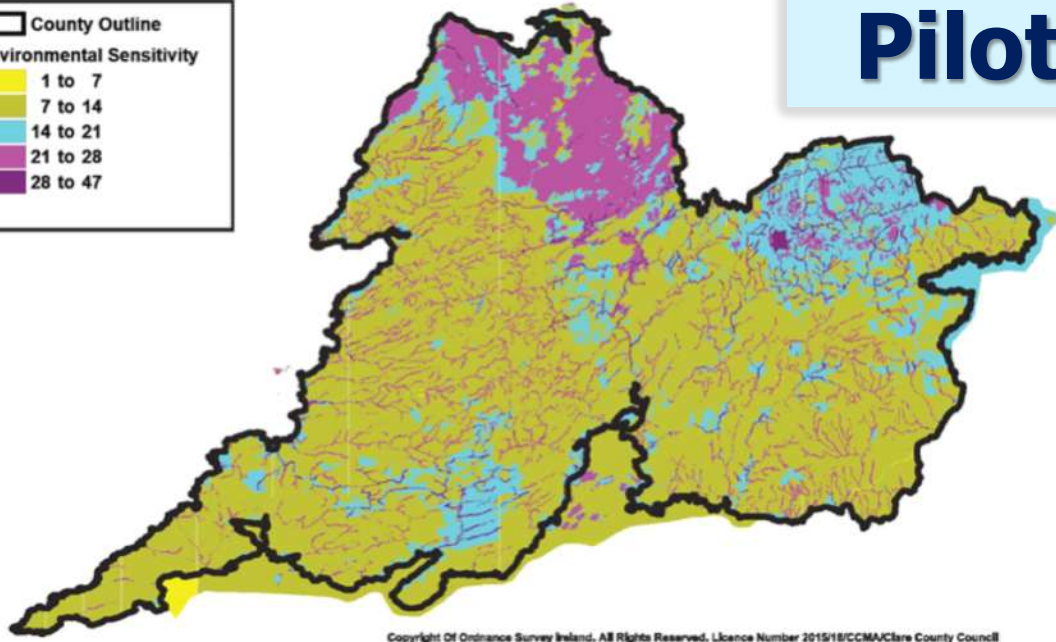
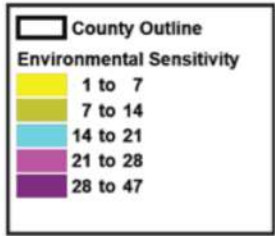
**Cultural Heritage Weight: 1 Variables:** National Inventory of Architectural Heritage (NIAH), Sites and Monuments Record

**Population and Human Health Weight: 1 Variables:** WFD RPA Groundwater Drinking Water, WFD RPA Surface Water Drinking Water (Lakes), WFD RPA Surface Water Drinking Water (Rivers)

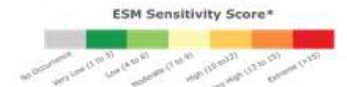
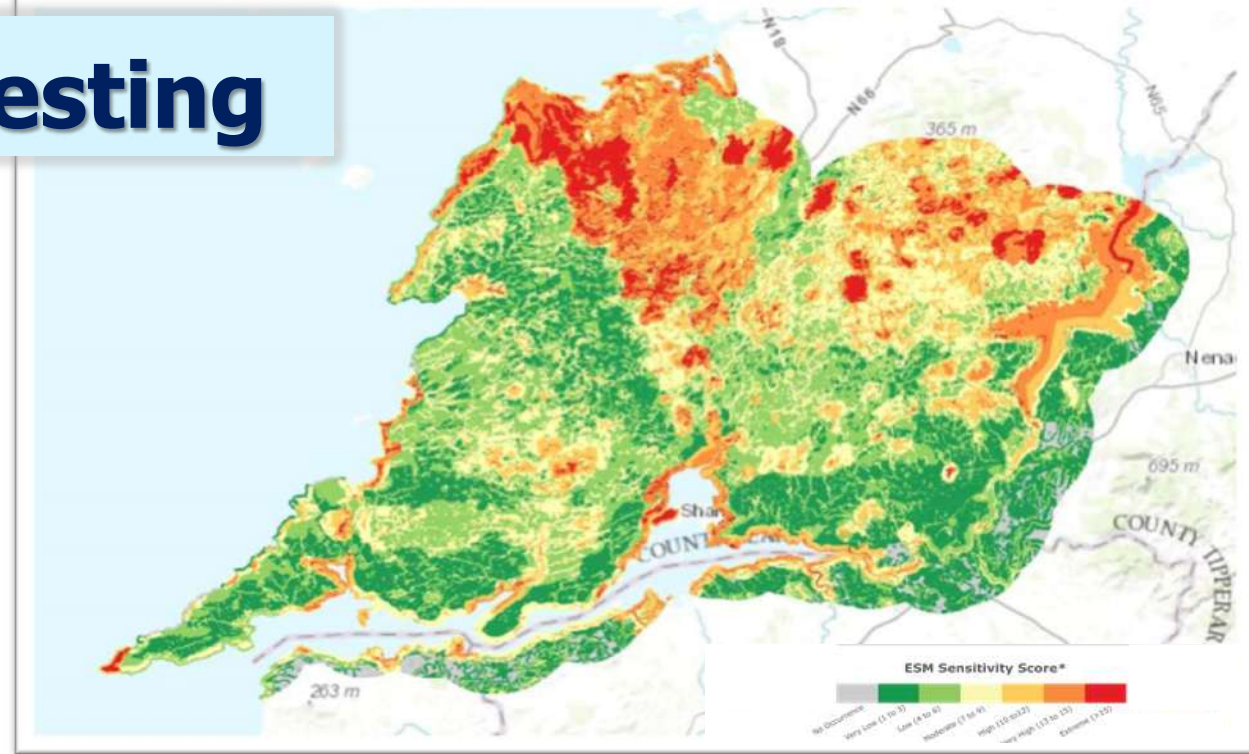
**Soils and Geology Weight: 1 Variables:** Peat Bogs

**Water Weight: 1 Variables:** Aquifer Vulnerability, Groundwater Source Protection Areas, Wetlands, WFD RPA Recreational Waters (Coastal and Transitional Water Bodies), WFD RPA Recreational Waters (Lakes), WFD RPA Water Dependant Habitats (SACs), WFD RPA Water Dependant Habitats (SPAs)

# Pilot Testing



Copyright Of Ordnance Survey Ireland. All Rights Reserved. Licence Number 2015/18/CCMA/Clare County Council



- Quicker times**
- No GIS expertise needed**
- Better and comparable results**
- Easier to analyse outputs**

*“The ESM output compares well and may actually be better than the in-house process undertaken for the County Development Plan SEA.”*

*“The sensitivity identifies areas where development would need to be carefully considered and sensitively planned.”*

*“Access to multiple datasets all in one platform is an excellent resource.”*

- Data scale and availability (e.g. LCAs)**
- Double counting**
- Weight for full exclusion**
- Assessment scope**

*“Helpful tool for overall visual appreciation - really depends on the datasets.”*

*“(…) Scale and resolution would however remain issues.”*

*“I'm not sure it does anything more than what some local authorities do at this scale which is probably down to the detail of the datasets.”*

# Real Life Applications: NPF & RSEs

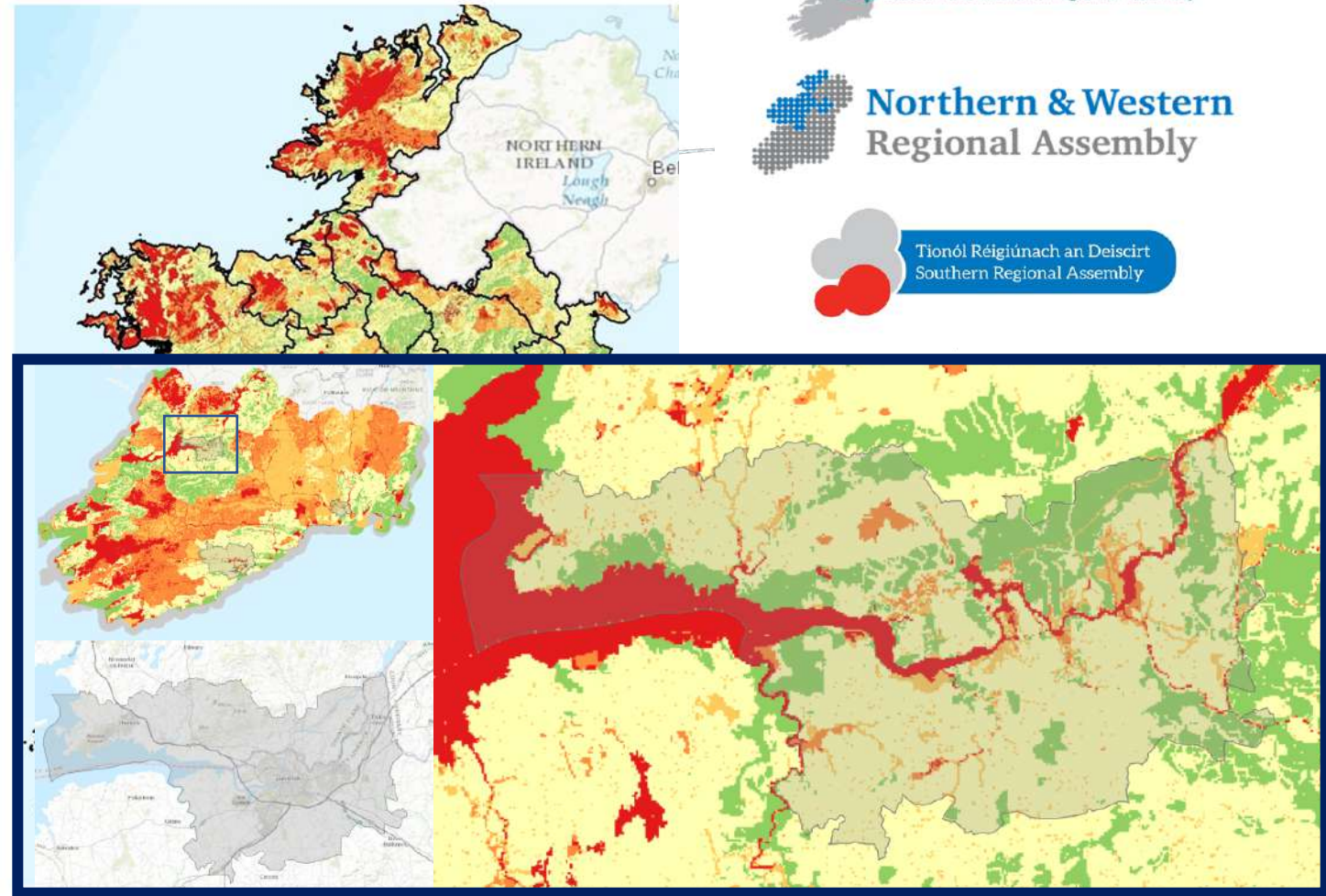
Table 5.16 – Data Variables used in the ESM Mapping

Theme	Weight	Variables
Biodiversity, Flora and Fauna	2	Special Areas of Conservation, Special Protection Areas, Natural Heritage Areas, Proposed Natural Heritage Areas, <i>Margaritifera</i> Sensitive Areas, Ancient Woodlands, Annex I Habitats, Coastal Habitats - Saltmarshes, Forest Inventory Planning System, Salmonid Waters, Woodland Habitats
Population and Human Health	1	WFD RPA Surface Water Drinking Water (Lakes), WFD RPA Surface Water Drinking Water (Rivers)
Soils and Geology	1	Geoparks and Geosites, Peat Bogs, Soil Permeability
Water	1	Aquifer Vulnerability, Bedrock Aquifer Susceptibility, Groundwater Source Protection Areas, Wetlands, WFD Groundwater Status, WFD Lake Status, WFD River Status, WFD RPA Nutrient Sensitive Areas (Lakes), WFD RPA Nutrient Sensitive Areas (Rivers), WFD RPA Recreational Waters Coastal, WFD RPA Recreational Waters Lakes, WFD RPA Water Dependant Habitats (SPAs), WFD RPA Water Dependant Habitats (SACs)
Air and Climate	1	Historical Flood Extents
Cultural Heritage	1	National Inventory of Architectural Heritage, Record of Monuments and Places

Source: AIRO ESM Webtool with user-selected input variables.



Figure 5.23 – ESM for Ireland



**"In preparing the NPF, an Environmental Sensitivity Mapping (ESM) tool was used in the SEA and environmental assessments. ESM is a method for identifying at a strategic level, environmentally sensitive areas and to help inform cumulative and in-combination effects on the environment. It also provides a visual overview of the relative sensitivity of areas, particularly where they overlap, in order to provide a more strategic and informed approach to planning"** (NPF, Chapter 11.1, p.15).

# Dissemination and peer-review



- **Final Research Report**

*Developing and Testing an Environmental Sensitivity Mapping Webtool to Support Strategic Environmental Assessment in Ireland*

- **4 peer-reviewer international papers**

- ✓ González, A (2017). A conceptualisation framework for building consensus on environmental sensitivity. *Journal of Environmental Management*, 200: 114-122.
- ✓ González, A (2017). Mapping environmental sensitivity: A systematic online approach to support environmental assessment and planning. *Environmental Impact Assessment Review*, 66, 86-98.
- ✓ González, A, Gleeson, J and McCarthy, E (2019). Designing and developing a web tool to support Strategic Environmental Assessment. *Environmental Modelling & Software*, 111: 472-482
- ✓ González, A, Kelly, C and Rymaszewicz, A (under review). Advancements in interactive Web-mapping tools and potential to support terrestrial and marine spatial planning practice. *Transactions in GIS*.

- **8 conference presentations: ESRI International, IAIA, IRLOGI, etc.**

# Game changer?

- **Publicly available**
- **Evidence-based assessments and decisions**
- **Efficiency**...time and cost savings
- **Good governance - consistency, transparency, comparability**
- **Exploratory** rather than definitive answers...data limitations, subjective but not arbitrary weights influencing outputs
- **Future developments**
  - Offshore (marine data)...Northern Ireland
  - Support tool for the preparation of LARES (SEAI-funded)



**SEA and planning support tool**

The background is a solid blue color. It features several dandelion seed heads and individual seeds. Some are in the foreground, appearing as dark blue silhouettes, while others are in the background, appearing as white or light blue. The seeds are scattered across the frame, some with long, thin stems and others as small, starburst-like shapes.

# ESM Webtool

*Bringing environmental assessment  
to your fingertips*

[www.enviromap.ie](http://www.enviromap.ie)



